



在BSP V3.0下建造新方案

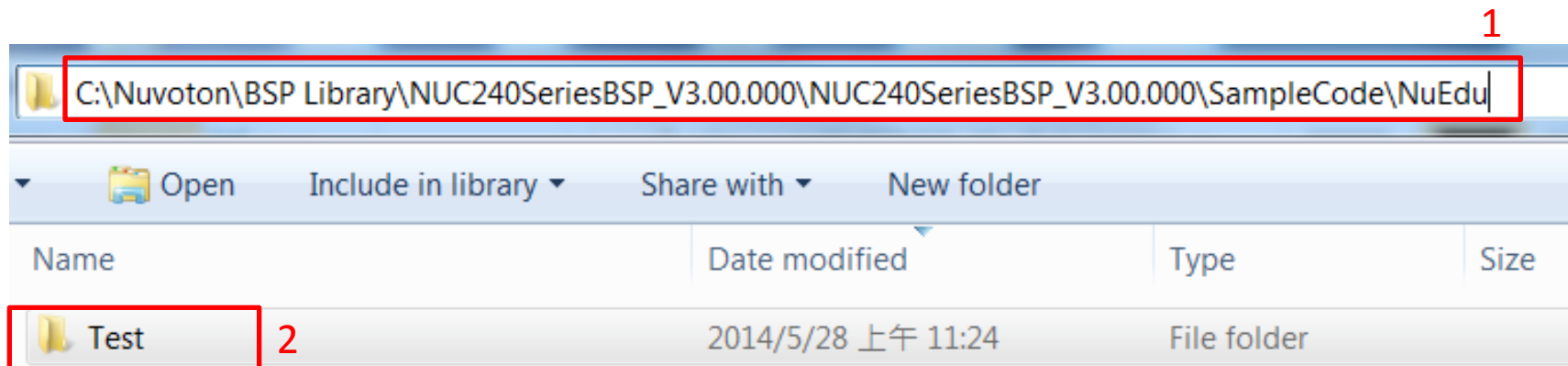
NuMicro@nuvoton.com

nuvoTon

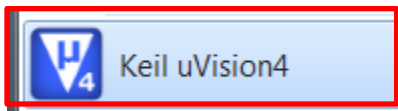


創造新的目錄夾

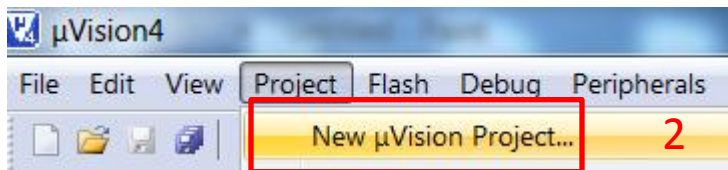
- ◆ 進入\NUC240SeriesBSP_V3.00.000\SampleCode\NuEdu之下
- ◆ 創造一個新的目錄夾" Test"



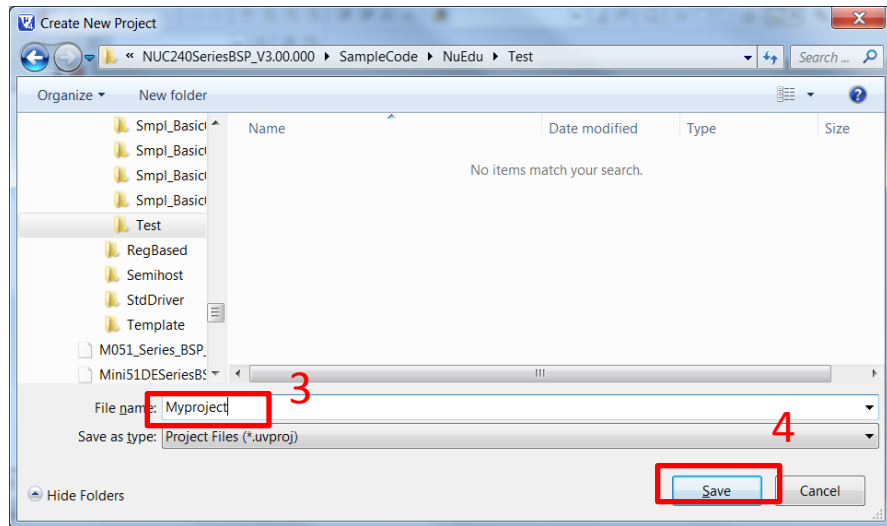
- ◆ 打開KEIL
- ◆ 在project之下，選擇" New uVison project"
- ◆ \NUC240SeriesBSP_V3.00.000\SampleCode\NuEdu\Test創建專案
輸入專案名稱" Myproject"
- ◆ 選擇Save



1



2

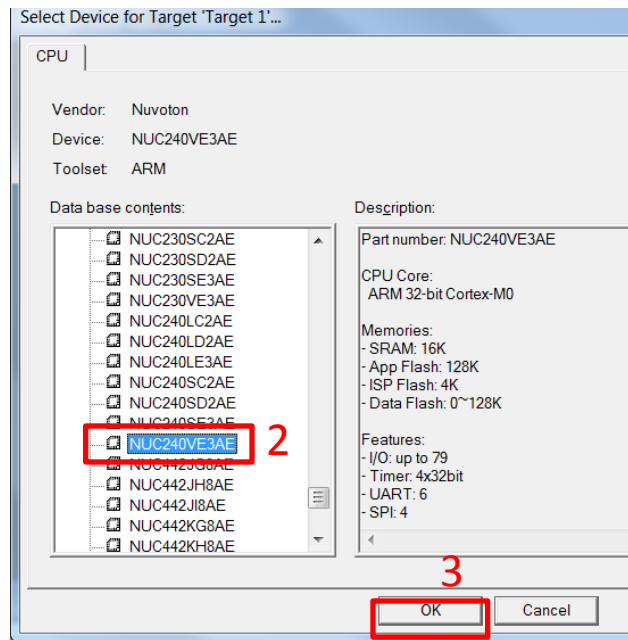
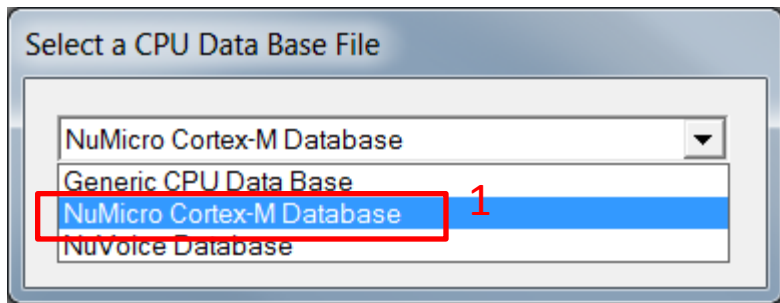


3

4

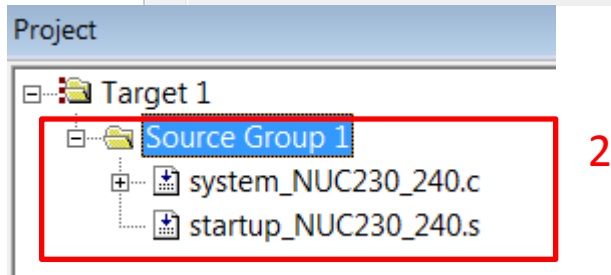
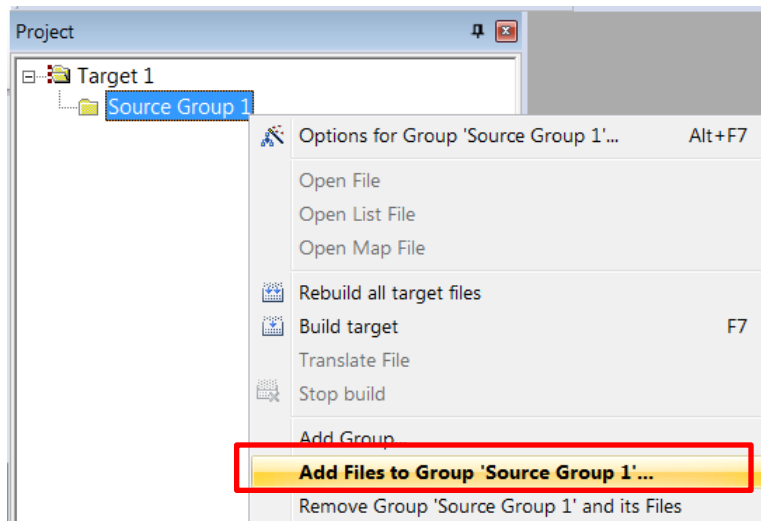
選擇晶片

- ◆ 選擇" nuMicro Cortex M DataBase"
 - 安裝nulink driver才會出現
- ◆ 選擇所使用的晶片

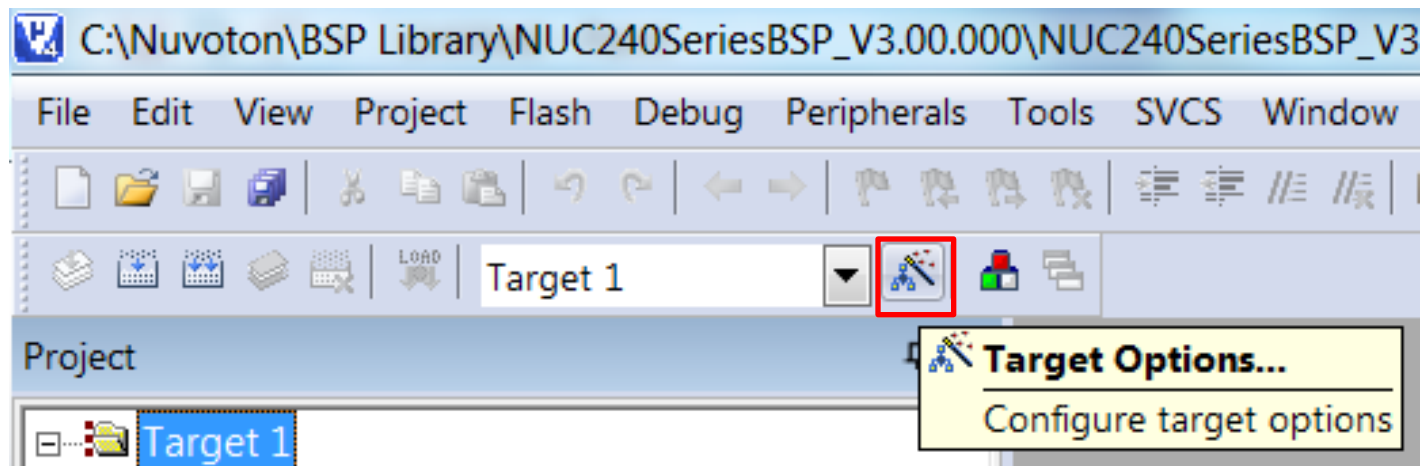


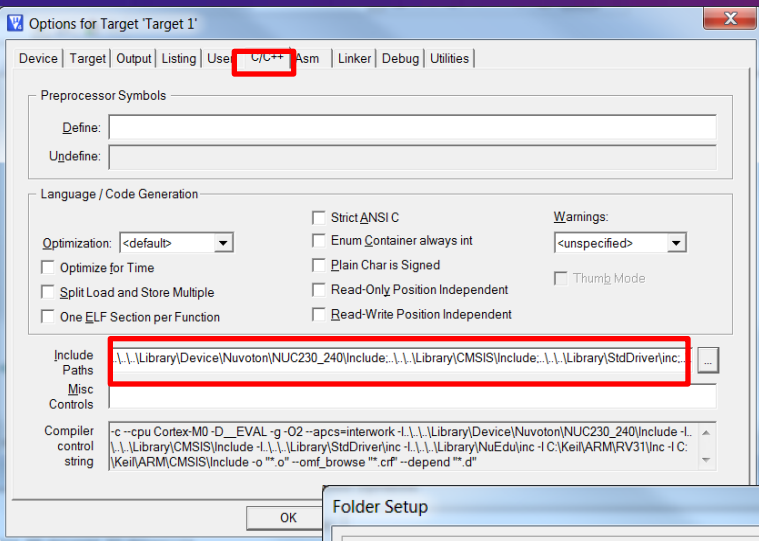
加入系統及啟動檔

- ◆ 在Source Group1的目錄夾下選擇" Add File to Group "Source Group1" ..."
- ◆ 加入系統及啟動檔
- ◆ NUC240SeriesBSP_V3.00.000\Library\Device\Nuvoton\NUC230_240\Source\system_NUC230_240.c
- ◆ NUC240SeriesBSP_V3.00.000\Library\Device\Nuvoton\NUC230_240\Source\ARM\startup_NUC230_240.s



◆選擇“ Target options”

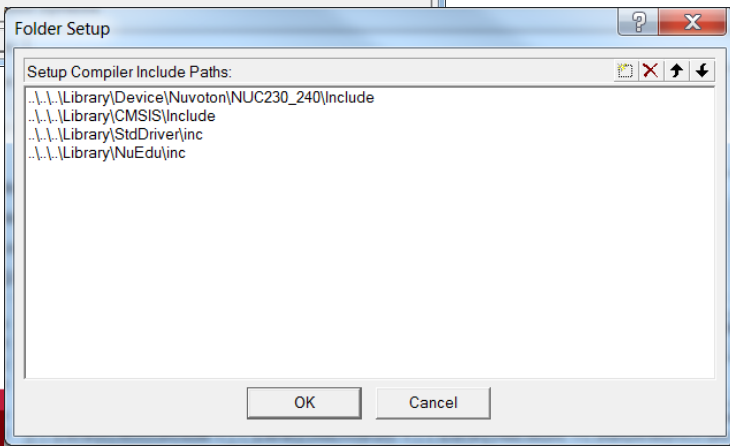




◆ 選擇 "C/C++"

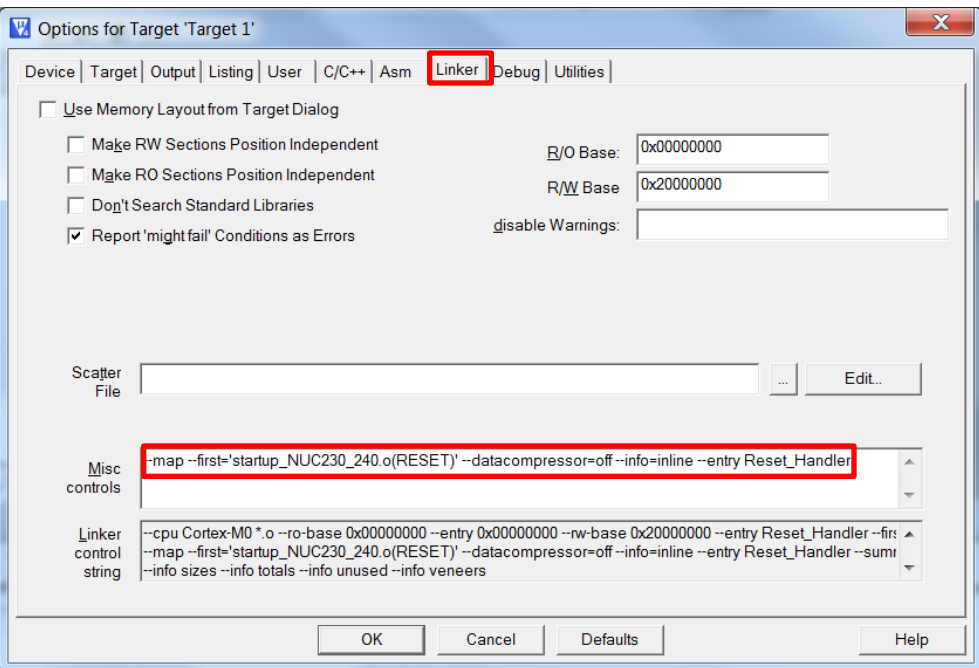
◆ Include paths:

- ..\..\Library\Device\Nuvoton\NUC230_240\Include;
- ..\..\Library\CMSIS\Include;
- ..\..\Library\StdDriver\inc;
- ..\..\Library\NuEdu\inc

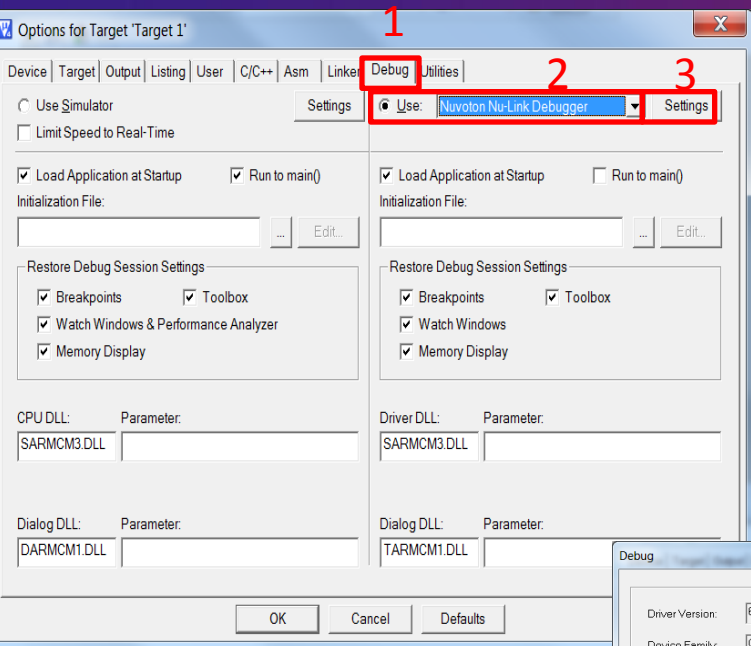


- ◆ 在link下
- ◆ 在misc controls輸入

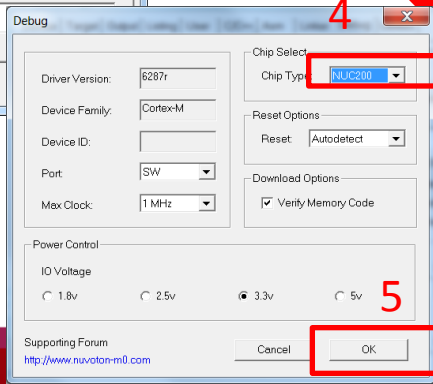
- --map --
first='startup_NUC230_240.o(RESET)'
--datacompressor=off --info=inline -
-entry Reset_Handler

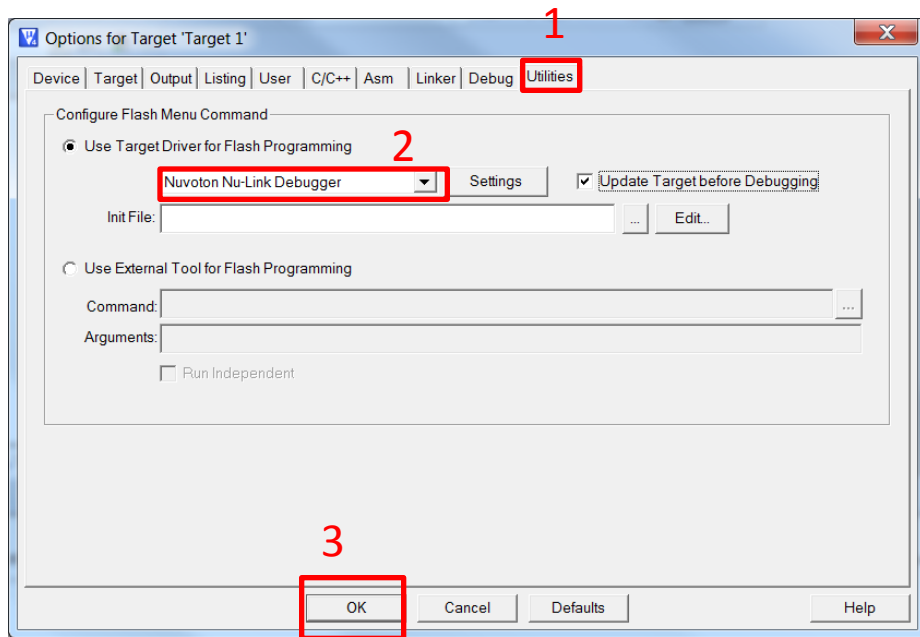


Debug 設定



- ◆ 在Debug
- ◆ 選擇Nuvoton Nu-Link Debugger
- ◆ 按下setting
- ◆ 選擇晶片的類型

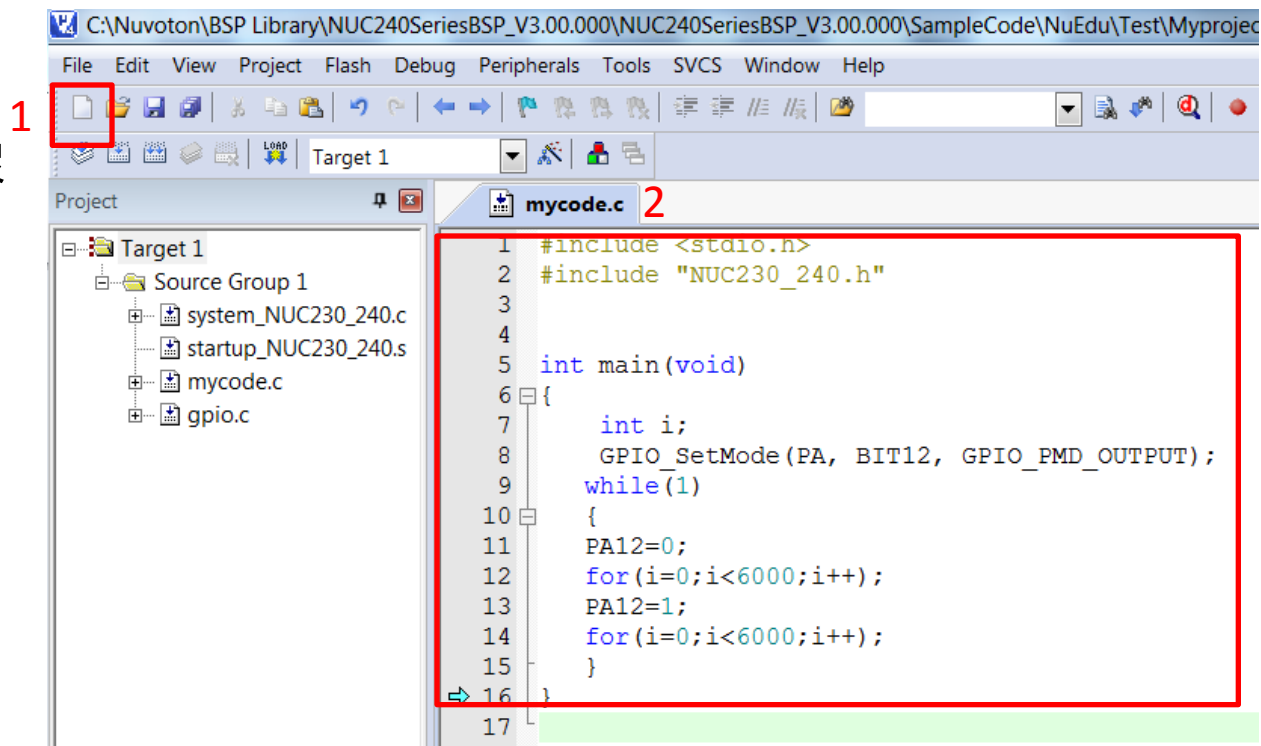




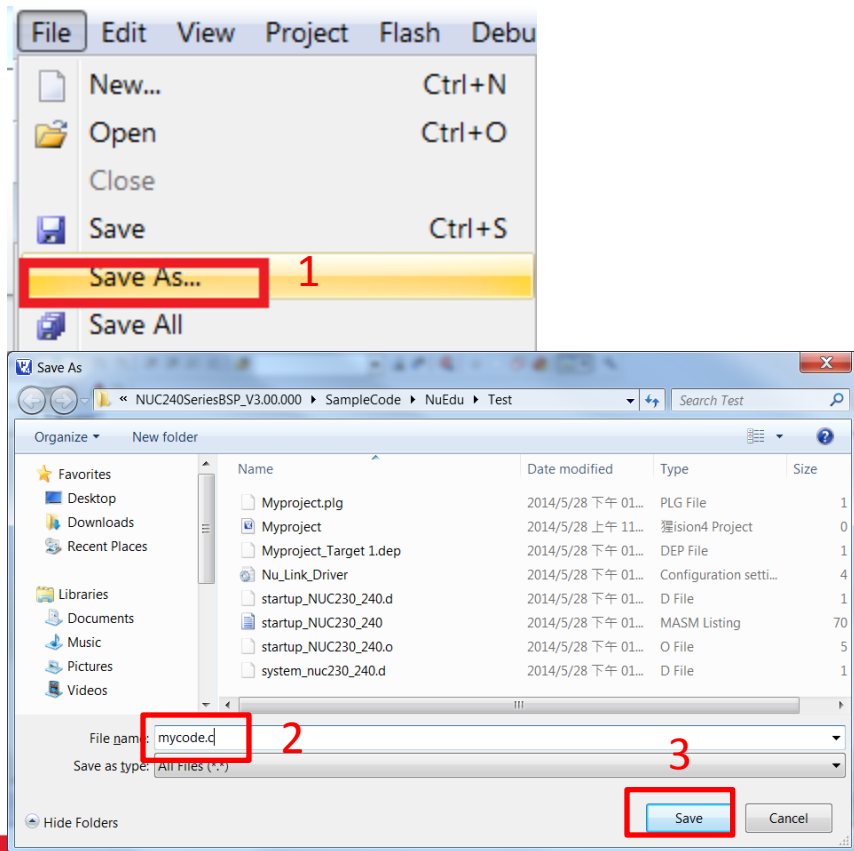
◆ 選擇Nuvoton Nu-link Debugger

◆ 建立新檔

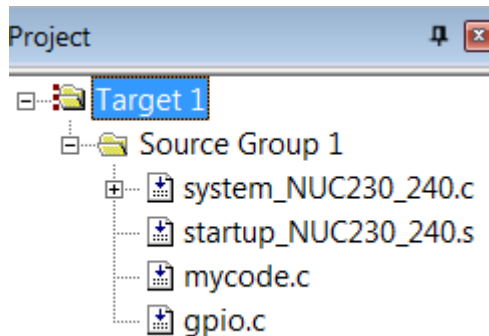
◆ 輸入新檔的內容



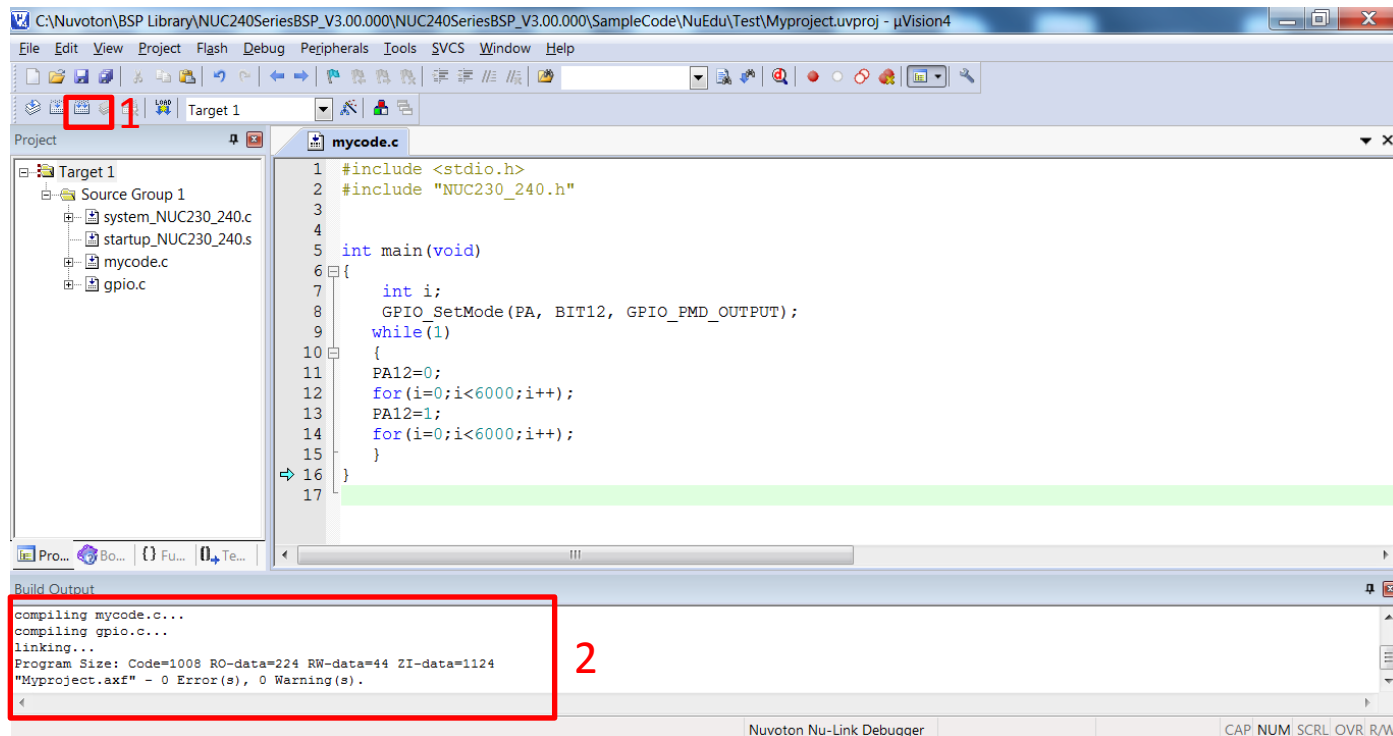
另存新檔



- ◆ 在file中選擇另存新檔
- ◆ 輸入檔案mycode.c
- ◆ 存檔案在test的目錄之下



- ◆ 在Source Group1的目錄夾下選擇" Add File to Group "Source Group1" ..."
- ◆ mycode.c加入專案
- ◆ NUC240SeriesBSP_V3.00.000 \Library\StdDriver\src\gpio.c 加入專案



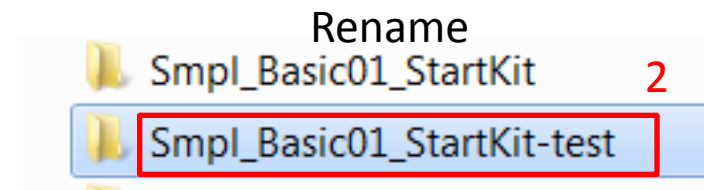
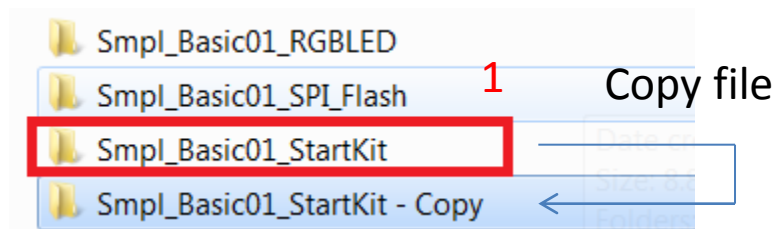


在BSP V3.0下快速新增方案

nuvoTon



◆ Copy file and rename



Modify project name and open project

